

# Doctor of Philosophy Program in Postharvest Technology (International Program)

The learning outcomes of our global Ph.D. program are the driving force behind its development. Ph.D. students will be expected to complete a research-based dissertation on the individual topic related to postharvest loss and the preservation of the quality of agricultural products. Integrative learning, critical thinking, and creative problem-solving skills will be developed in candidates, and the graduates will adopt a lifelong learning perspective.

## Career

Skillful researcher; R & D personnel;  
Research planner; Lecturer;  
Research manager; Government official

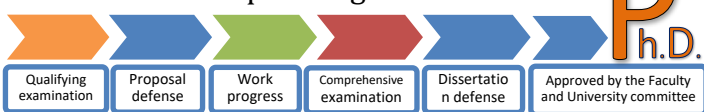


## Quality assurance

### Student recruitment



### Dissertation completion guidelines

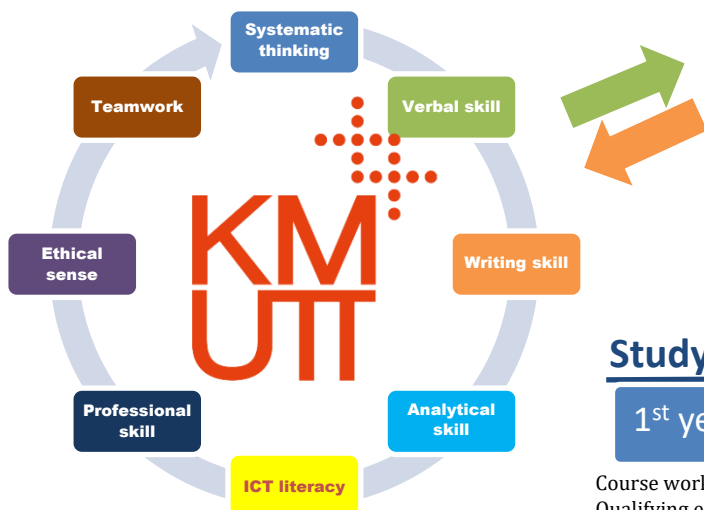


### Program learning outcome (PLO)

**L01.** Graduates demonstrate excellent corporate citizenship and social responsibility.

**L02.** Graduates are capable of communicating the outcomes of research and technology to the public community.

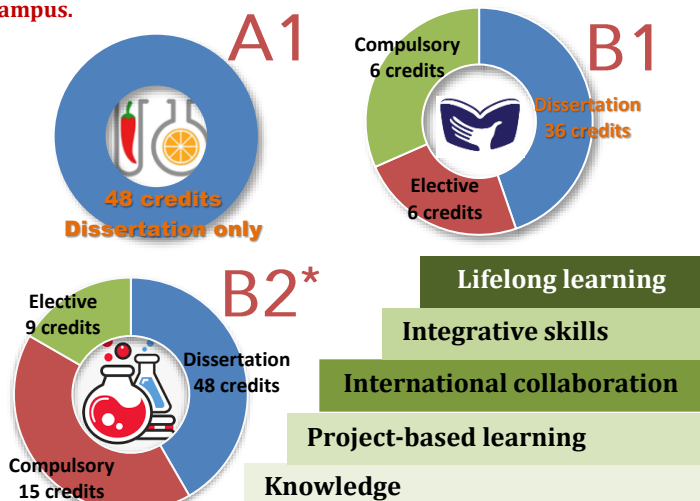
**L03.** Graduates possess knowledge and skills in postharvest technology and are competent of analyzing, planning, and resolving problems through the integration of knowledge and the pursuit of lifelong learning.



Contact: pongphen.jit@kmutt.ac.th

## Program specification

The University Council granted program permission at Meeting No. 259 on March, 3<sup>rd</sup>, 2020. **Academic activities take place at the King Mongkut University of Technology in Thonburi, "Bangkhuntien" campus.**



### Entry requirement:

1. M.Sc.(or B.Sc.\*) students in Agricultural Science or its equivalent levels.
2. Proficiency in English (speaking, reading and writing)
3. Following qualification as rules and regulations of KMUTT.

**\*For outstanding bachelor students**

## Student support

### Academic:

- Learning infrastructure
- Internet/WiFi access
- Extra curriculum
- Student exchange
- Double degree program
- English improvement
- Advisory system



### Research:

- High technology equipments
- Research internship program
- Postharvest Technology Innovation Center



### Internationalization:

- English instructor
- International program
- Foreign student
- Foreign staff
- Visiting professor
- Student mobility
- Staff mobility

## Academic staff

Our personnel all earned a Doctorate degree in a relevant field in order to build an interdisciplinary program. All personnel have regular opportunity to participate in national and international conferences, and to encourage research partnership with foreign research organizations.

## Study plan for success

